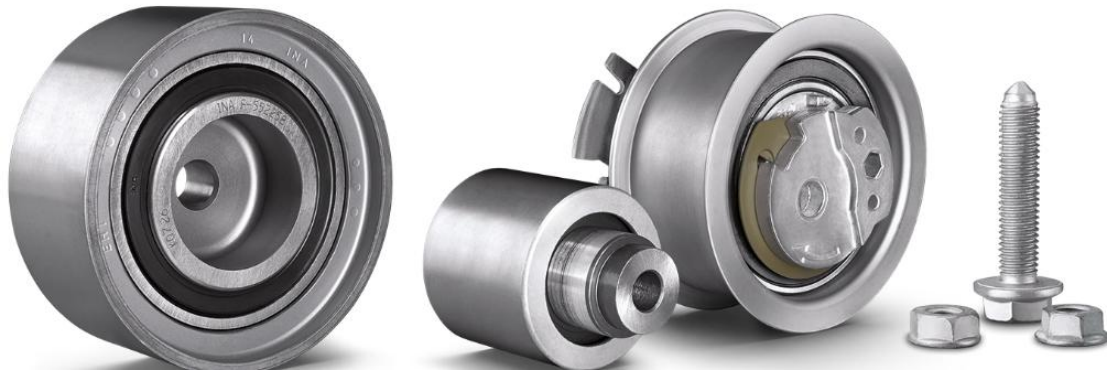


INA Tensioner and Deflection Pulleys



Constant belt tension under all conditions

Tensioner and deflection pulleys allow optimum belt guidance around the driven units. They also ensure constant belt tension – in all engine operating conditions. In addition, the rollers are used for calming critical belt sections and serve to avoid collision problems with the surrounding construction.

For many years, renowned automobile and engine manufacturers have relied on belt drive components from Schaeffler. The high-quality INA pulleys and tension rollers are used both in auxiliary and timing drives.

